

WEEKLY NEW BRUNSWICK INFLUENZA REPORT
Reporting period: September 20 – September 26, 2009 (week 38)
 Week 35 marked the start of the 2009-2010 Influenza Season

1. **Reports of influenza-like illness (ILI) from Flu Watch sentinel physicians in New Brunswick:**

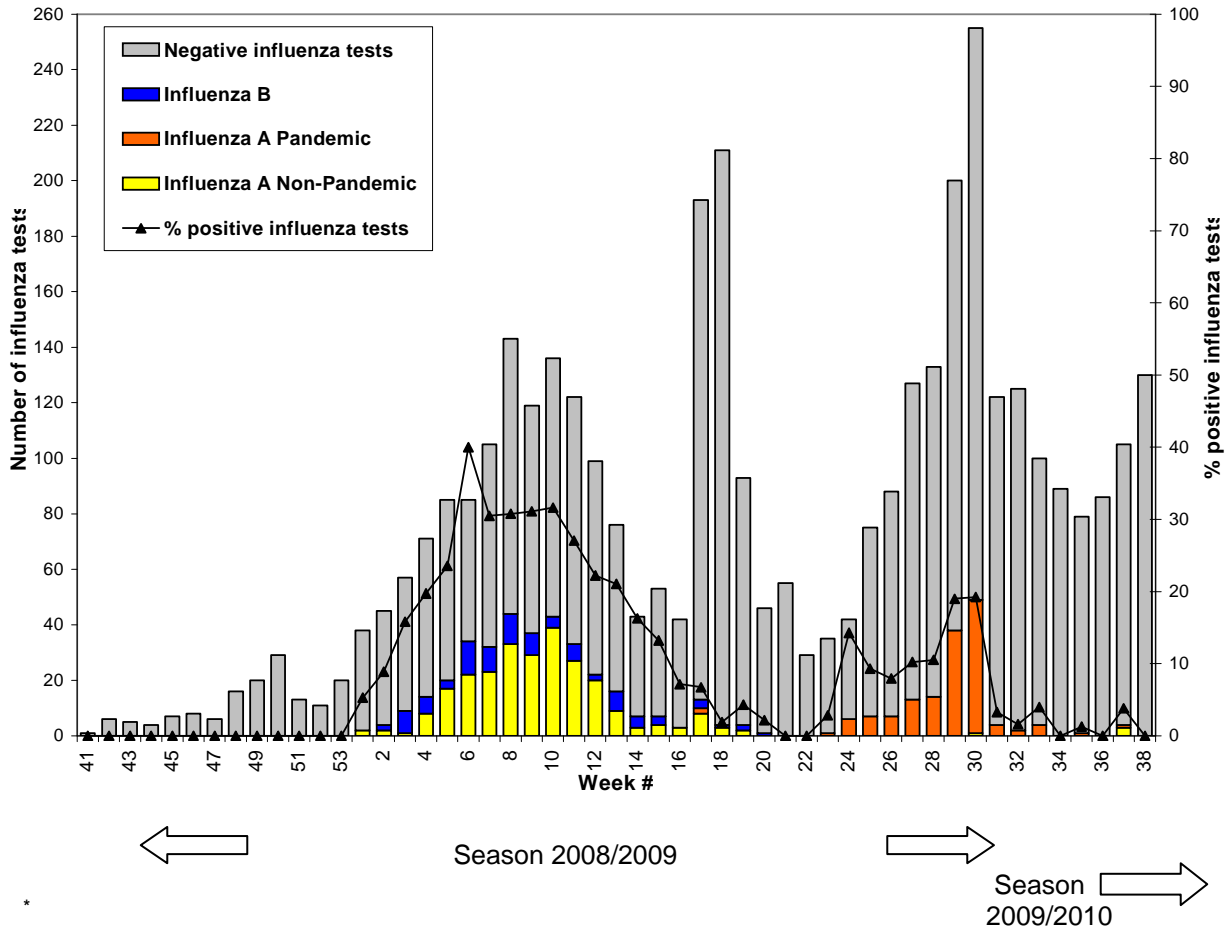
(9 physicians recruited so far this year report the number of patients with ILI symptoms over total number of patients seen on one day each week):

7 physicians reported a total of 6 cases of ILI of the 198 patients seen for any reason during this reporting period

This week, the ILI consultation rate was 30.3 consultations per 1,000 patient visits which is a slight decrease from last week. The sentinel response rate was 78%.

2. **New Brunswick Influenza Virus Surveillance Program** (specimens are submitted by recruited sentinel physicians, Emergency Rooms, nursing homes and some community physicians). All laboratory specimens are tested using a real-time PCR assay, which is a rapid detection method designed for detection of all known variants of influenza A and B. All laboratory-confirmed cases are reported for the week when laboratory confirmation was received.

Graph 1: Number and percent of positive influenza specimens in New Brunswick (based on data from Dumont Laboratory), by week, as of September 26, 2009



* Week 41 to week 34 constitutes the 2008/2009 season and week 35 marks the start of season 2009/2010.

Table 1: Influenza activity level[†] and positive influenza test results by Health Region in New Brunswick for reporting week and cumulative numbers for the 2008/2009 and 2009/2010 seasons.

	Reporting period: 20/09/09 –26/09/09			Cumulative: (2009/2010 season) 30/08/09 –26/09/09			Cumulative: (2008/2009 season) 05/10/08 –29/08/09			
	Activity level	Influenza A		Influenza B	Influenza A		Influenza B	Influenza A		Influenza B
		Non-Pandemic	Pandemic (H1N1)		Non-Pandemic	Pandemic (H1N1)		Non-Pandemic	Pandemic (H1N1)	
Region 1	Sporadic	0	0	0	1	0	0	123	67	68
Region 2	Sporadic	0	0	0	0	1	0	21	10	8
Region 3	Localized	0	0	0	1	1	0	10	59	4
Region 4	No activity	0	0	0	0	0	0	51	4	7
Region 5	No activity	0	0	0	0	0	0	10	0	2
Region 6	Sporadic	0	0	0	1	0	0	37	4	0
Region 7	No activity	0	0	0	0	0	0	6	3	7
Total NB		0	0	0	3	2	0	258	147	96

Table 2: ILI activity/outbreaks in New Brunswick nursing homes and schools for the reporting week, and cumulative numbers for the 2008/2009 and 2009/2010 seasons, by Health Region.

	Reporting period: 20/09/09 –26/09/09			Cumulative # of outbreaks (current season) 2009-2010	Cumulative # of outbreaks (past season) 2008-2009
	Lab-confirmed outbreaks in Nursing Homes*	Schools reporting ILI outbreaks**	Others lab-confirmed outbreaks*		
Region 1	0 out of 13	0 out of 74	0	0	2
Region 2	0 out of 14	0 out of 81	0	0	18
Region 3	0 out of 14	2 out of 95	0	2 (school)	15
Region 4	0 out of 6	0 out of 22	0	0	0
Region 5	0 out of 2	1 out of 18	0	1 (school)	7
Region 6	0 out of 9	0 out of 36	0	0	10
Region 7	0 out of 4	0 out of 27	0	1 (school)	11
Total NB	0 out of 62	3 out of 353	0	4	63

*Two or more ILI cases within a seven day period, including at least one laboratory-confirmed case of influenza. Outbreaks are reported in the week when laboratory confirmation is received.

**Schools reporting greater than 10% absenteeism on any day most likely due to ILI

[†] Influenza activity level definition is available on the PHAC FluWatch website: <http://www.phac-aspc.gc.ca/fluwatch/08-09/def08-09-eng.php>

National Flu Watch Program - Additional information on influenza activity in Canada and around the world is available on the Public Health Agency of Canada's website at:

www.phac-aspc.gc.ca/fluwatch/index.html

More information on the Pandemic H1N1 Flu virus in New Brunswick is available on the NB Health website at: <http://www.gnb.ca/cnb/Promos/Flu/index-e.asp>

Prepared by the Communicable Disease Control Unit
Office of the Chief Medical Officer of Health, Tel: (506) 444-3044