

## WEEKLY NEW BRUNSWICK INFLUENZA REPORT

Reporting period: May 27 to June 2 2018 (week 22)

### Summary:

#### In New Brunswick, influenza activity is low in week 22

##### New Brunswick:

- There have been 5 positive influenza cases in week 22. To date this season, 2707 cases have been reported, 280 had influenza A (H3), 24 had influenza A (H1N1)pdm09, 1103 had influenza A (unsubtyped, most likely the H3 strain), 1285 had influenza B and 15 had both influenza A and B simultaneously.
- Both Influenza A(H3N2) and Influenza B are co-circulating this season.
- There have been 3 new influenza associated hospitalizations during week 22. So far this season, 689 influenza associated hospitalizations have been reported with 45 deaths.
- The ILI consultation rate was 0.0 consultations per 1,000 patients visits in week 22. The ILI rate was within the expected levels for this time of year.
- No new influenza/ILI outbreaks were reported in week 22. So far this season, 43 outbreaks were reported in total: 6 in hospitals, 23 in nursing homes, 5 in other settings (special care homes and adult residential facilities) and 9 ILI outbreaks in schools.

##### Canada:

- Updates from the National Influenza Surveillance will only be available on a monthly basis during the summer months.

##### International:

###### Seasonal influenza:

- Influenza detections continued to increase in recent weeks in Southern Africa, however influenza activity remained under seasonal thresholds in most other countries of the temperate zone of the southern hemisphere. In the temperate zone of the northern hemisphere influenza activity returned to inter-seasonal levels in most of the countries. Increased influenza activity was reported in some countries in tropical America. Worldwide, seasonal influenza subtype A accounted for the majority of influenza detections.

###### Emerging Respiratory Viruses:

- MERS CoV:
  - WHO: [http://www.who.int/csr/disease/coronavirus\\_infections/en/](http://www.who.int/csr/disease/coronavirus_infections/en/)
  - CDC: <http://www.cdc.gov/coronavirus/mers/>
- Avian Influenza:
  - WHO: [www.who.int/csr/disease/avian\\_influenza/en/index.html](http://www.who.int/csr/disease/avian_influenza/en/index.html)

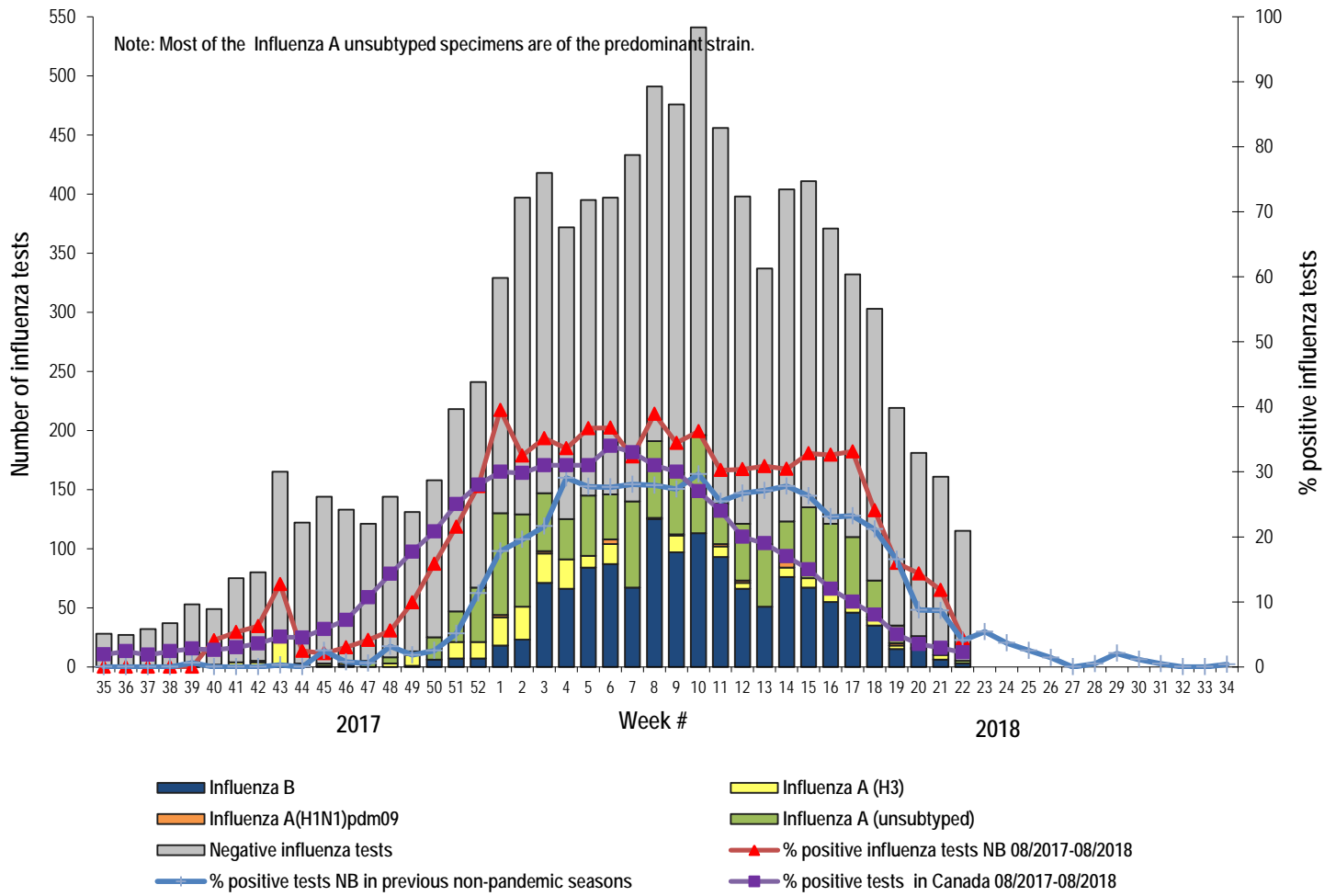
### 1) Influenza Laboratory Data<sup>1</sup>

- Influenza activity is low in week 22.
- Five influenza cases were reported during week 22.
- Since the beginning of the season, 2707 influenza cases were reported, 280 with influenza A (H3), 24 with influenza A(H1N1)pdm09, 1103 with influenza A (unsubtyped)<sup>2</sup>, 1285 with influenza B and 15 with co-infection of influenza A & B simultaneously.

<sup>1</sup> Surveillance specimens are submitted by recruited New Brunswick Sentinel Practitioner Influenza Network (NB SPIN) practitioners, which are comprised of sites in Emergency Rooms, in Family Practice, in First Nations communities, in Nursing Home, in Universities and in Community Health Centers. Diagnostic specimens are submitted by physicians in the community/hospital setting. Influenza laboratory data is comprised of results from surveillance and diagnostic specimens. All laboratory specimens are tested using a real-time PCR assay, which is a rapid detection method designed for detection of all known variants of influenza A and B. All laboratory-confirmed cases are reported for the week when laboratory confirmation was received.

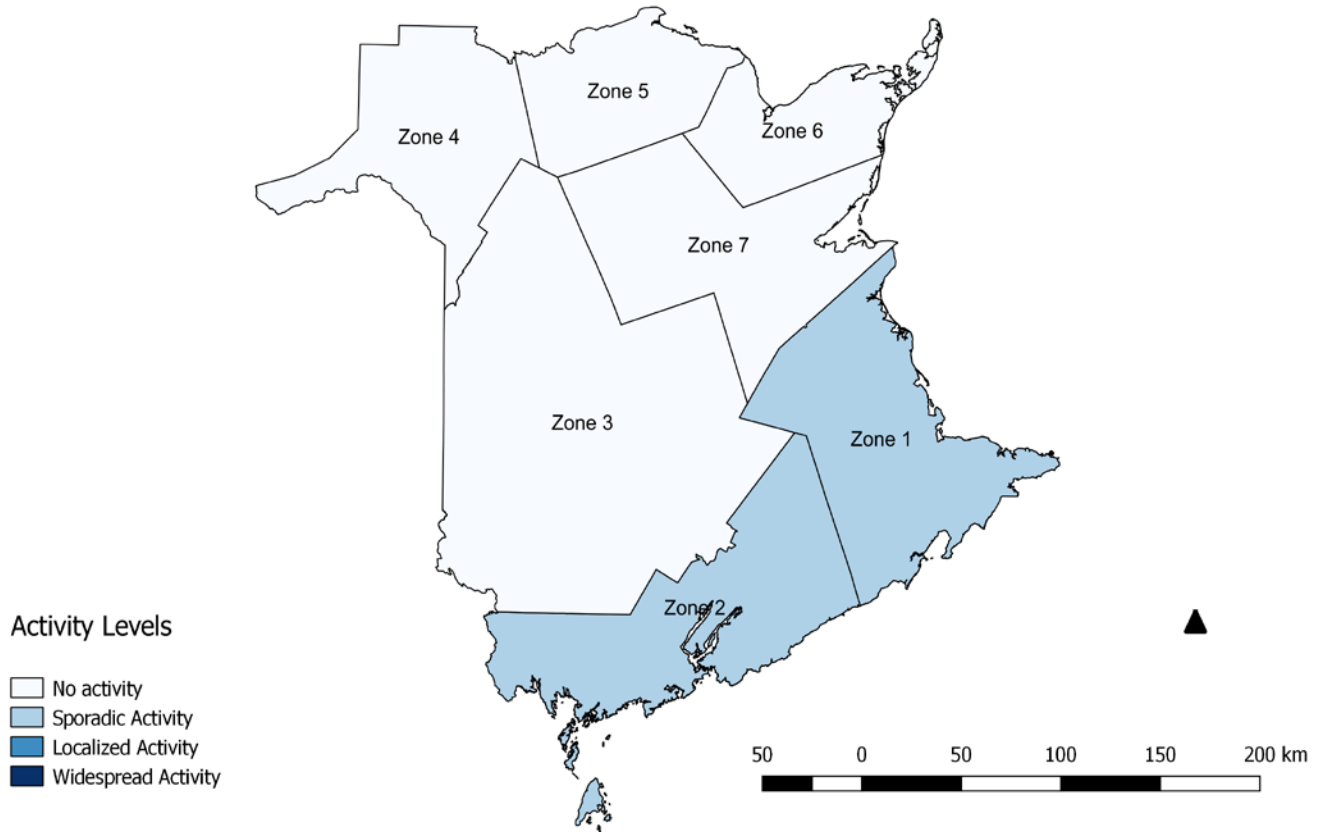
<sup>2</sup> The influenza A (unsubtyped) detections are most likely of the predominant strain (H3).

**Graph 1: Number and percent of positive influenza specimens<sup>3</sup> in New Brunswick by week, up to June 2 2018**  
 (data source: G. Dumont Lab results)



<sup>3</sup> Total number of positive influenza tests is higher than number of cases since some individuals had co-infection of A & B simultaneously.

Figure 2: Influenza/ILI activity levels<sup>4</sup> by Health Zones, in New Brunswick, for reporting week, season 2017/2018.



<sup>4</sup> No activity is defined as no laboratory-confirmed influenza detections in the reporting week, however, sporadically occurring ILI may be reported. Sporadic activity is defined as sporadically occurring ILI and lab confirmed influenza detection(s) with no outbreaks detected within the influenza surveillance region.

Localized activity is defined as evidence of increased ILI with lab confirmed influenza detection(s) and outbreaks in schools, hospitals, residential institutions and/or other types of facilities occurring in less than 50% of the influenza surveillance region.

Widespread activity is defined as evidence of increased ILI with lab confirmed influenza detection(s) and outbreaks in schools, hospitals, residential institutions and/or other types of facilities occurring in greater than or equal to 50% of the influenza surveillance region.

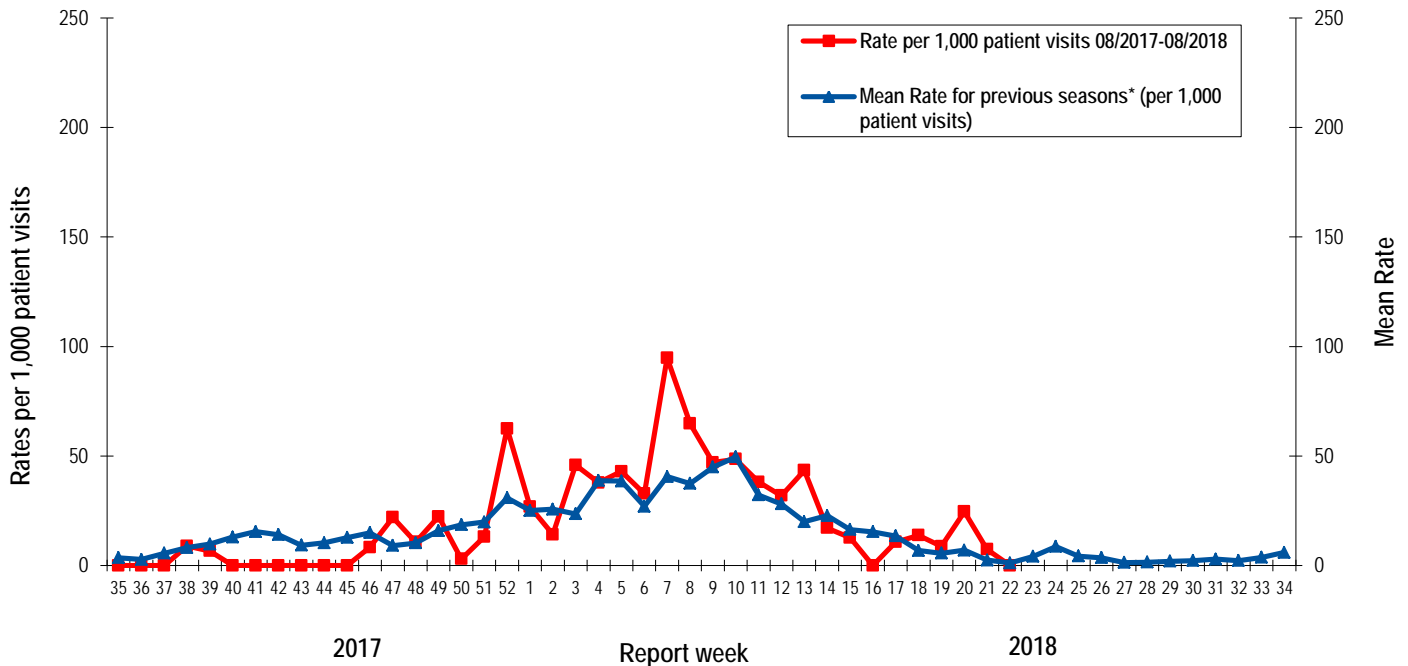
**Table 1:** Positive influenza cases by Health Region, in New Brunswick for reporting week, cumulative current and previous seasons.  
 (data source: G. Dumont lab results up to June 2 2018)

Zone	Reporting period: May/27/2018–June/02/2018						Cumulative: (2017/2018 season) Aug./27/2017 –June/02/2018						Cumulative: (2016/20167 season) Aug./28/2016 –Aug./26/2017					
	A				B	A & B co- infection	A				B	A & B co- infection	A				B	A & B co- infection
	A(H3)	(H1N1) pdm09	Unsubty ped/ Other	A Total	Total	Total	A(H3)	(H1N1) pdm09	Unsubty ped/ Other	A Total	Total	Total	Total	(H3)	(H1N1) pdm09	Unsubty ped/ Other	A Total	Total
Zone 1	0	0	1	1	3	0	102	11	575	688	744	11	75	0	505	579	89	1
Zone 2	0	0	1	1	0	0	32	3	126	161	158	1	21	1	77	99	8	0
Zone 3	0	0	0	0	0	0	63	3	194	260	162	3	25	0	117	142	23	0
Zone 4	0	0	0	0	0	0	19	2	53	74	84	0	18	0	31	50	5	1
Zone 5	0	0	0	0	0	0	9	0	8	17	6	0	2	0	3	5	6	0
Zone 6	0	0	0	0	0	0	38	3	75	116	68	0	27	0	62	89	11	0
Zone 7	0	0	0	0	0	0	17	2	72	91	63	0	21	0	52	73	16	0
<b>Total NB</b>	<b>0</b>	<b>0</b>	<b>2</b>	<b>2</b>	<b>3</b>	<b>0</b>	<b>280</b>	<b>24</b>	<b>1103</b>	<b>1407</b>	<b>1285</b>	<b>15</b>	<b>189</b>	<b>1</b>	<b>845</b>	<b>1037</b>	<b>158</b>	<b>2</b>

## 2) ILI Consultation Rates<sup>5</sup>

- During week 22, the ILI consultation rate was 0.0 consultations per 1,000 patients visits. The ILI rate was within the expected levels for this time of year.
- During week 22, the sentinel response rate was 19%, for both the FluWatch sentinel physicians and the NB SPIN practitioners.

Graph 2: ILI Consultation Rates in New Brunswick, by report week, season 2017/18 compared to previous seasons\*



\* The mean rate was based on data from the 1996/97 to 2016/2017 seasons and excludes the Pandemic season (2009/10).

## 3) ILI and Laboratory-Confirmed Outbreak Data

Table 2: ILI activity/outbreaks in New Brunswick nursing homes and schools for the reporting week, current and previous seasons.

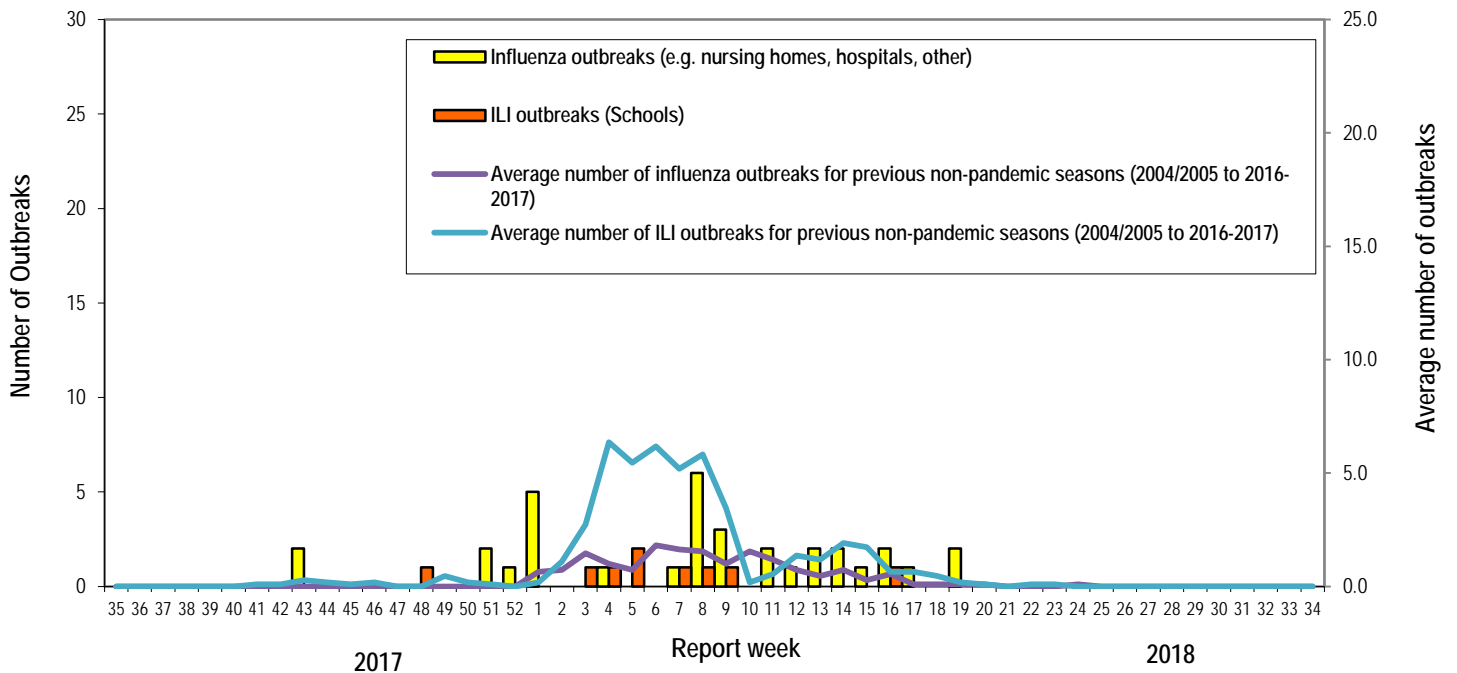
	Reporting period: May/27/2018–June/02/2018			Cumulative # of outbreaks season 2017-2018	Cumulative # of outbreaks season 2016-2017
	Lab-confirmed outbreaks in Nursing homes <sup>6</sup>	ILI school outbreaks <sup>7</sup>	Lab-confirmed outbreaks in Other settings <sup>4</sup>		
Zone 1	0 out of 13	0 out of 74	0	7	3
Zone 2	0 out of 16	0 out of 81	0	10	5
Zone 3	0 out of 14	0 out of 95	0	19	14
Zone 4	0 out of 6	0 out of 22	0	1	0
Zone 5	0 out of 2	0 out of 18	0	0	1
Zone 6	0 out of 9	0 out of 35	0	3	0
Zone 7	0 out of 4	0 out of 27	0	3	2
Total NB	0 out of 64	0 out of 352	0	43	25

<sup>5</sup> A total of 28 practitioner sites (16 FluWatch sentinel physicians and 12 NB SPIN sites) are recruited this season to report the number of ILI patients and total patient consultations one day during a reporting week.

<sup>6</sup> Two or more ILI cases within a seven day period, including at least one laboratory-confirmed case of influenza. Outbreaks are reported in the week when laboratory confirmation is received.

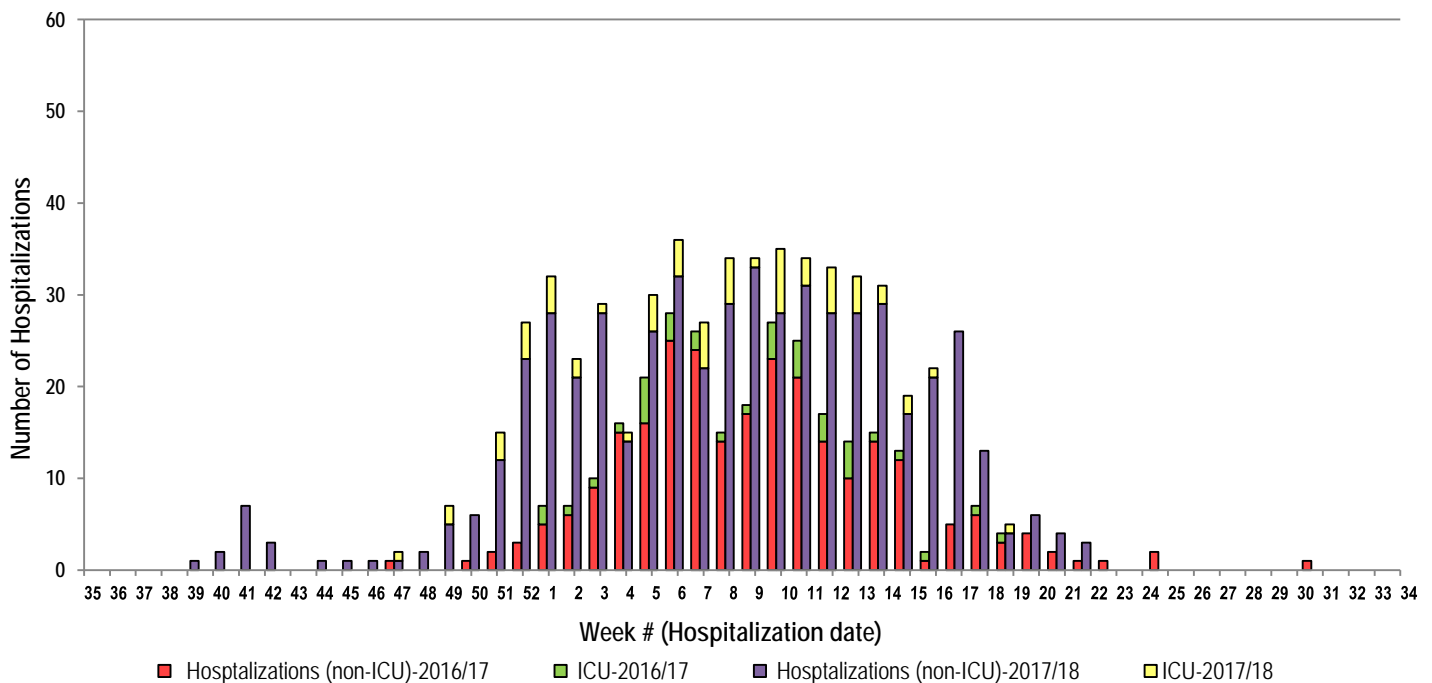
<sup>7</sup> Schools reporting greater than 10% absenteeism which is likely due to ILI.

**Graph 3:** Number of Influenza Outbreaks (nursing homes, hospitals, other) and ILI Outbreaks (schools) reported to Public Health in New Brunswick, by report week, season 2017/18.



4) Influenza associated Hospitalization<sup>8</sup> and Death<sup>9</sup> Surveillance<sup>10</sup>

**Graph 4:** Influenza associated Hospitalizations and ICU admissions in New Brunswick, by week of hospitalization for current and past season.\*



\*Those who had been hospitalized 15 days or more prior to laboratory confirmation date were excluded from the graph

\*\*Forty-five deaths have been reported so far in season 2017-2018.

<sup>8</sup> Hospitalizations (including ICU admissions) are influenza associated; they may or may not be due to influenza.

<sup>9</sup> Deaths are influenza associated; influenza may not be the direct cause of death.

<sup>10</sup> In early January 2014, the Office of the Chief Medical Officer of Health implemented a new provincial surveillance system in collaboration with the Regional Health Authorities to monitor influenza-associated hospitalizations, intensive care unit admissions and deaths. A standardized Enhanced Surveillance Form is used to collect data on hospitalizations.

National Flu Watch Program - Additional information on influenza activity in Canada and around the world is available on the Public Health Agency of Canada's website at: <http://www.phac-aspc.gc.ca/fluwatch/>

Other Links:

World-[http://www.who.int/influenza/surveillance\\_monitoring/updates/latest\\_update\\_GIP\\_surveillance/en/index.html](http://www.who.int/influenza/surveillance_monitoring/updates/latest_update_GIP_surveillance/en/index.html)

Europe: [http://www.ecdc.europa.eu/en/healthtopics/seasonal\\_influenza/epidemiological\\_data/Pages/Weekly\\_Influenza\\_Surveillance\\_Overview.aspx](http://www.ecdc.europa.eu/en/healthtopics/seasonal_influenza/epidemiological_data/Pages/Weekly_Influenza_Surveillance_Overview.aspx)

PAHO:[http://new.paho.org/hq/index.php?option=com\\_content&task=blogcategory&id=805&Itemid=569](http://new.paho.org/hq/index.php?option=com_content&task=blogcategory&id=805&Itemid=569)

Australia: <http://www.health.gov.au/internet/main/publishing.nsf/Content/cda-surveil-ozflu-flucurr.htm>

New Zealand: [http://www.surv.esr.cri.nz/virology/influenza\\_weekly\\_update.php](http://www.surv.esr.cri.nz/virology/influenza_weekly_update.php)

Argentina: <http://www.msal.gov.ar/>

South Africa: <http://www.nicd.ac.za/>

US: [www.cdc.gov/flu/weekly/](http://www.cdc.gov/flu/weekly/)

Prepared by the Communicable Disease Control Unit  
Office of the Chief Medical Officer of Health, Tel: (506) 444-3044